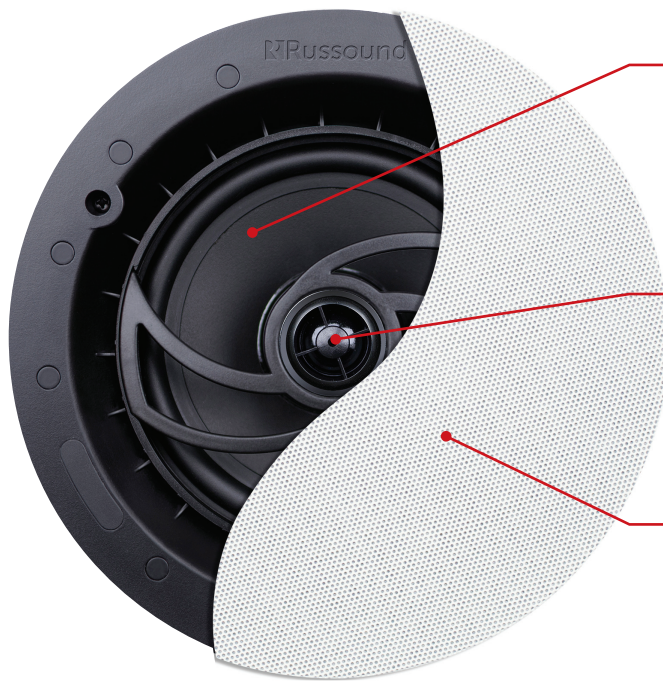


6.5" Two-way In-ceiling/in-wall Acclaim™ Performance Series, Wide Dispersion Speaker

Provides great sound for a variety of applications



Woofer Technology

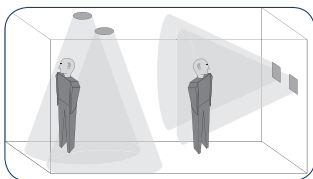
- 6.5" Polypropylene cone is well damped to accommodate all program material, spoken and musical
- NBR rubber cone surround damps resonance and provides exceptional durability in any humidity level and over a wide temperature range

Tweeter Technology

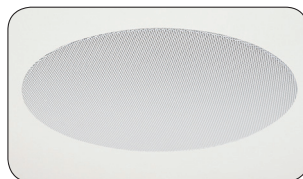
- Pivoting, low-diffraction assembly focuses the high-frequency sound in any direction independently of the woofer to create direct or diffuse sound fields
- 0.75" Polyetherimide dome with Ferrofluid-cooling and wide dispersion for clear and detailed high frequencies

Magnetic Edgeless Grille

- Designer-inspired edgeless magnetic grilles conceal loudspeaker elements yet allow high fidelity sound through. Grille can be painted to match décor



Wide dispersion design
provides uniform coverage
over a large area



Edgeless grille blends
discreetly into the décor



Triple-dog mounting
system for quick and
efficient installations
25% faster than
4-dog models



Trusted reliability that
you can count on

Installation Instructions

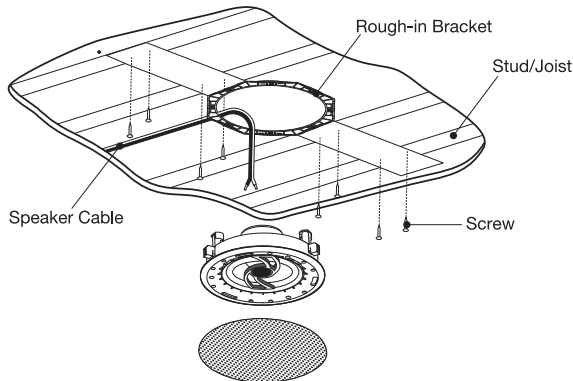
Pre-wire or Pre-construction

Locate all obstructions (AC wiring, plumbing, duct work, studs, and joists). Route the speaker wire to the speaker location avoiding all obstacles.

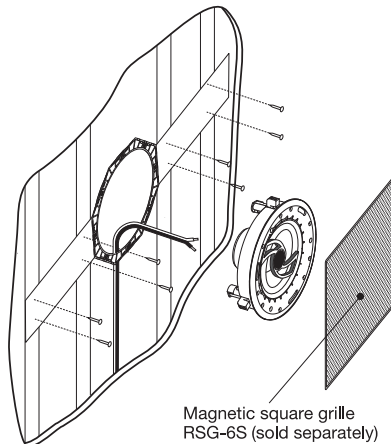
Russound offers Speaker Rough-In Brackets that can be fastened to the adjacent studs. Once the dry wall is installed, the opening is cut-out. There are holes molded into the bracket for speaker wire tie-off to keep the wire from being lost during construction.

Make sure the speaker cut-out (hole) doesn't extend further than 1/4" (0.6 cm) from the inside of the mounting bracket.

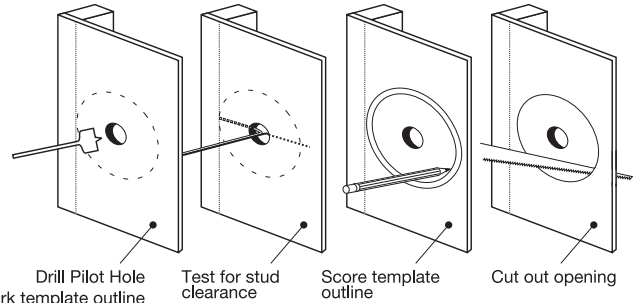
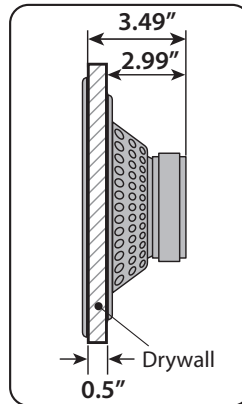
In-ceiling bracket Installation



In-wall bracket Installation

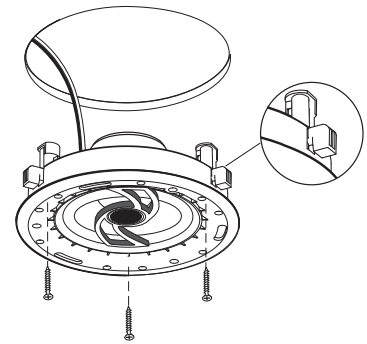


In-wall placement



Note:

Drill shallow to avoid damage to wiring, pipes and ductwork.



Center the speaker in the cutout. Rotate the frame as needed before tightening the screws. Tighten the screws equally until the clamps secure the frame.

Do not overtighten.

Technical Specifications

Model	Description	Woofer	Tweeter	Recommended Power	Frequency Response	Sensitivity	Nominal Impedance	Magnet Structure	Overall Dimensions	Cut-out Dimensions	Mounting Depth
RSF-610	Performance Speaker, Two-way In-ceiling/in-wall	6.5" (16.51 cm) Polypropylene Cone	0.75" (1.91 cm) Pivoting PEI	5 - 80 watts	50Hz - 20kHz	88dB @ 1w/1m	8 ohms	Ferrite 11 oz (0.312 kg)	9.13" dia. (23.19 cm)	8.375" dia. (21.27 cm)	3.49" (8.86 cm)

Product Specifications

Model Number	Part Number	Shipping Dimensions	Shipping Weight
RSF-610/pair	3175-535086	10.5"L x 10.5"W x 12.2"H, (26.7 x 26.7 x 31cm)	7.0 lbs (3.2 kg)

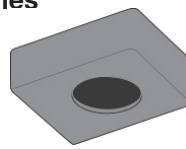
Optional Accessories



Square Grille
RSG-6S



Rough-In Bracket
SB-C67 - In-ceiling/In-wall



Sound Blocking Flexbox Back Box
FBC1-FR In-Ceiling



1 Hour
Fire Rating

Russound | 1 Forbes Road Newmarket, NH 03857 | 603.659.5170 | www.russound.com

©2014 Russound/FMP, Inc. All rights reserved. Russound and the Russound logo are registered trademarks of Russound/FMP, Inc.

Acclaim is a trademark of Russound/FMP, Inc. All other trademarks are the property of their respective owners.

Russound reserves the right to change specifications without notice.